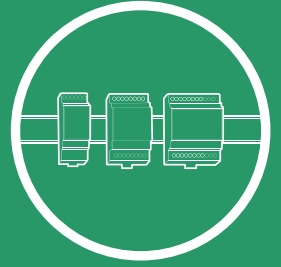
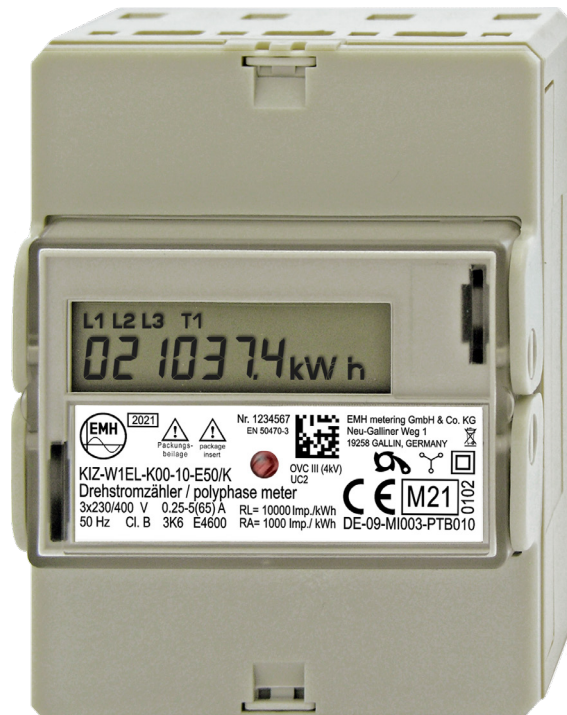


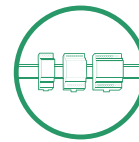
KIZ



COMPACT INDUSTRIAL METER

- FOR INDUSTRIAL APPLICATIONS AND INVOICING PURPOSES
- M-BUS INTERFACE
- PULSE TRANSMITTER S0
- UP TO 2 TARIFFS
- RECORDING OF INSTANTANEOUS VALUES
- COMPACT DESIGN (4 HP)





KIZ		Compact industrial meter
Voltage	4-conductor meter 2-conductor meter	3 x 230/400 V 230 V
Current		0.25 – 5 (65) A or 0.5 – 10 (65) A
Starting current		20 mA
Utilisation category	UC (Utilisation Category)	UC2 (as per EN 62052-31)
Frequency		50 Hz
Accuracy	Active energy	Cl. B as per EN 50470-1, -3
Measuring types	Active energy	+A (with return lock)
Pulse values	LED Output	10,000 pulse/kWh 100 pulse/kWh (pulse length 100 ms) or 1,000 pulse/kWh (pulse length 30 ms)
Energy registers	Quantity	Max. 2 tariff registers (T1 / T2)
Control inputs for tariff switching (optional)	Quantity System voltage	Max. 1 230 V AC
Data preservation		Voltage-free in EEPROM, at least 20 years
Display	Version Number of digits Arity Digit size in value range	LCD 7 6.1 Approx. 5.8 x 3.5 (W x H) mm
Data interface (optional)	M-Bus	As per DIN EN 13757-2, -3 (300...9600 baud)
Output (optional)	Quantity SO output Pulse length	1 Max. 27 V DC, 27 mA (passive) 100 ms
Energy supply	Switched-mode power supply	3-phase from measuring voltage
Power consumption per phase	Voltage circuit Current path	< 0.55 VA / < 0.4 W < 0.01 VA
Safety characteristics	Over voltage category (OVC) Rated peak withstand voltage	OVC III (as per EN 62052-31) 4 kV (as per EN 62052-31)
EMC characteristics	Insulation strength Surge voltage Resistance to HF fields	Insulation: 4 kV AC, 50 Hz, 1 min EMC: 4 kV, pulse 1.2/50 µs, 2 Ω ISO: 6 kV, pulse 1.2/50 µs, 500 Ω 10 V/m (under load)
Temperature range	Defined operating range Limit range for operation, storage and transport	-25 °C...+55 °C -40 °C...+70 °C
Humidity		Maximum 95%, non-condensing, as per EN 62052-11, EN 50470-1 and EN 60068-2-30
Environmental conditions	Mechanical Electromagnetic Intended operating location	M1 according to the Measuring Instruments Directive (2014/32/EU) E2 according to the Measuring Instruments Directive (2014/32/EU) Interior as per EN 50470-1
Housing	Dimensions Protection class Degree of protection of housing, connections Housing material Fire properties	4 HP = 72 x 90 x 61 (W x H x D) mm II IP 20 Glass-fibre reinforced polycarbonate, halogen-free, recyclable As per EN 62052-31
Weight		Approx. 350 g
Connection cross sections	Conductor / neutral conductor terminals Voltage / additional terminals	Max. 16 mm ² Max. 2.5 mm ²
Additional equipment features	Recording of instantaneous values	Power, voltage, current

Subject to technical changes.

