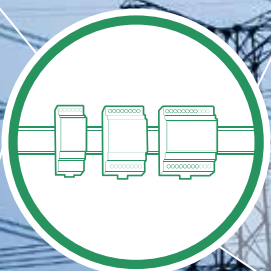
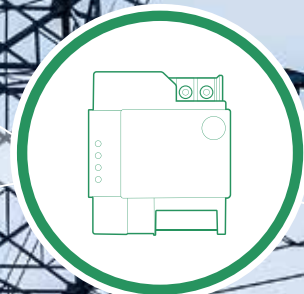


PRODUCT OVERVIEW

DATE: 2020



EMH metering

EMH metering is one of the world's leading providers of digital systems for the recording, transmission, storage and distribution of energy measurement data. With its intelligent and coordinated measuring systems, EMH metering enables energy companies to digitise their energy systems and develop new business models.

Whether for smart metering, smart grid, smart home or e-mobility applications: With our digital measurement solutions, you lay the foundation for the networked energy world of tomorrow. We are the only manufacturer in Germany to offer the energy industry a complete meter and communication portfolio – from FNN basic meters through meter technology for e-mobility rechargers, to the intelligent metering system for smart meter rollouts. This means that you get everything from a single source – with "Made in Germany" quality.

For 25 years, we have been producing cutting-edge technology for digital measuring systems for large energy suppliers, as well as for municipal utilities, distribution and transmission system operators, and companies from industry and commerce. At our production facility in Gallin near Hamburg, Germany, our 300 employees produce high-performance products for digitisation of the energy industry. We take pride in our "Made in Germany" label – and fulfil the highest quality standards.



Product portfolio

On the following pages, you can learn about our products, for which we will be pleased to make you an offer on request:

	Page
Special meters (load profile meters)	4-7
Domestic Meters	
- modern measuring systems (EDL)	8 - 11
- modern measuring systems (FNN basic meters)	12 - 13
Industrial meters (DIN rail devices)	14 - 17
Communication (modules & modems)	18 - 21
Optical communication adapters	22 - 23
Software	24 - 26
Disclaimer / copyright	27
Contact partners	
Legal notice	28

The services and system solutions offered by our subsidiary, EGS GmbH, can be found in the EGS information material or online on the company's website at www.egs-metering.com.

Special Meters for special applications



Special Meters

Our special meters are high-precision meters for use in transmission networks, and as meters for registered load profile measurements (RLM counters). With these technically sophisticated developments, EMH metering is one of the world's leading meter manufacturers. Our precision meters not only measure extremely accurately, they also provide detailed information about the state of your network. This is the prerequisite for secure network operations and setting up a smart grid. Our RLM meters will also help you to keep your network stable.



LZQJ-XC 4-quadrant / combined meter

LZQJ-XC series meters are designed for universal applications in accordance with the VDEW specification 2.1. The meters are characterised by high reliability levels through to the use of our proven measuring method. The powerful processor system guarantees a solid basis for future extensions.

Summary:

- › 2 independent interfaces
- › Pluggable communication module (GSM/GPRS/LTE, Ethernet)
- › Can be connected to SMGW via ZSM-XC
- › Swappable readout battery
- › Network analysis compliant with DIN EN 50160
- › DLMS compatibility

Can be combined with the following products:

- › VARIOMOD-XC module series (GSM/GPRS/LTE, Ethernet)
- › VARIOMOD modem series
- › IMXCRS interface module
- › ZSM-XC meter security module
- › DCF antenna (DCF77-TH2)
- › Communication and parametrisation software: Combi Master



NXT4 4-quadrant meters for advanced industrial and domestic applications

The NXT4 is our flexible solution for industrial and extended domestic applications. It is the basic component of every measuring system. The powerful processor system guarantees a solid basis for future challenges. The NXT4 can be optionally supplied with a longer terminal block for extensions.

Summary:

- › For direct connection up to 120A, or as a transformer meter
- › Integrated 100A cut-off relay solution
- › Increased surge voltage resistance up to 12 KV
- › Extended network analysis compliant with DIN EN 50160
- › DLMS compatibility
- › Optionally with Ethernet interface

Can be combined with the following products:

- › VARIOMOD-NXT (GSM/GPRS)
- › VARIOMOD modem series (GSM/GPRS, Ethernet)
- › Communication and parametrisation software: Combi Master



DMTZ-XC

Digital multi-tariff meter

The DMTZ-XC multi-tariff meter, as the "little brother" of the LZQJ-XC, is designed for measuring active energy. Optionally, it can be designed as a dual energy direction meter. Specially designed for use in industry and the home, it features flexible tariff control capability.

Summary:

- › Pluggable communication module (GSM/GPRS, Ethernet, LTE, PSTN)
- › Can be connected to SMGW via ZSM-XC
- › Tariff control via integrated tariff timer and/or ripple control receiver
- › Maximum measurement coverage
- › Recording of the load profile, active power, active energy

Can be combined with the following products:

- › VARIOMOD-XC (GSM/GPRS, Ethernet, LTE, PSTN)
- › VARIOMOD modem series (GSM/GPRS, Ethernet, LTE, PSTN)
- › IMXCRS interface module
- › ZSM-XC meter security module
- › DCF antenna (DCF77-TH2)
- › Communication and parametrisation software: Combi Master

XC-RACK

Precision plug-in meter for 19" racks

The XC-RACK is the EMH precision meter for installation in 19" rack frames. It is used for recording large quantities of energy, e.g. for measuring at the points of supply. The device is based on the high-precision measurement technology used for XC devices. It is also designed as a plug-in meter for simple installation and swapping.

Summary:

- › Measuring precision in Cl. 0.2s and Cl. 0.5s
- › Extended network analysis compliant with DIN EN 50160
- › Ethernet interface
- › DLMS compatibility

Can be combined with the following products:

- › VARIOMOD modem series (GSM/GPRS, Ethernet, PSTN)
- › DCF antenna (DCF77-TH2)
- › LTR fibre optic cut-off relay
- › Communication and parametrisation software: Combi Master
- › 19" plug-in frame

EM4TII

Energy meter for railway applications

The EM4TII energy meter is designed for use in railway applications (e.g. for the supply and regeneration of energy in locomotives), alternatively in accordance with EN 50463:2013 und EN 50463:2017. Conceived for DC and AC systems, it can be flexibly connected to current and voltage transformer systems.

Summary:

- › Precision class 0.5R in accordance with EN 50463-2 for active and reactive energy supply and regeneration
- › Compliant with the requirements of the TSI LOC&PAS Directive of the European Union (EU), 2013 and 2018 versions.
- › Connection capability for a GPS receiver for storing location information
- › Optionally available with a TEMA4Tplus installation box

Can be combined with the following products:

- › Optional TEMA4Tplus installation box
- › Communication and parametrisation software: Combi Master

Domestic Meters

for everyday applications



Domestic Meters

Digital household meters from EMH metering represent state-of-the-art technology. Meter operators are therefore guaranteed a successful rollout of the modern measuring equipment (mME) and intelligent metering system (iMsys) – exactly as prescribed by the "Digitisation of the Transition to Renewable Energy Act". EMH metering also uses measurement technologies with guaranteed reliability and precision. And last but not least, the high quality of our meters means a long service life and therefore investment security.



mMe4.0

Electronic domestic meter

The mMe4.0 is the particularly efficient meter solution for rollouts. To economically optimise the rollout, we rely on interoperable standards, automated ordering and production processes, high quality standards, and new approaches to designing the hardware. The mMe4.0 meets all legal requirements for the rollout.

Summary:

- › Legally compliant modern measuring equipment
- › Precision class Cl. Compliant with DIN EN 50470-1, -3
- › Interoperable
- › Industry 4.0 compatibility and sustainable manufacturing
- › Quality by design
- › Efficient installation process
- › Added value capability
- › Gateway connection using the OKK-BKE and ZSM-ED
- › MID approval
- › PIN protection



ED300L

Electronic domestic meter

The G generation ED300L corresponds to the latest form of a three-phase meter defined in accordance with the Meter Operation Act for measuring energy in the domestic sector. It fulfils the requirements of the FNN specification EDL, supplemented by the presentation of historical 24-month data.

Summary:

- › MID approval
- › Can be used as a modern measuring device in accordance with the Meter Operation Act
- › MSB interface (RS-232) with SML protocol
- › 1 and 2 tariffs
- › 60 A or 100 A
- › PIN protection

Can be combined with the following products:

- › Terminal cover MKKD-ED300L for supplementary devices
- › Communication and parametrisation software: Combi Master
- › VMMT-E tariff control module
- › Gateway connection using the OKK-BKE and ZSM-ED

ED300S

Electronic domestic meter

The G generation ED300S is a three-phase meter that is likewise intended for use in domestic applications. Functionally optimised, it is a cost-effective alternative to the ED300L, which can be extended for bidirectional measurements depending on the measuring requirements.

Summary:

- › MID approval
- › Can be used as a modern measuring device in accordance with the Meter Operation Act
- › MSB interface (RS-232) with SML protocol
- › 1 tariff
- › 60 A or 100 A
- › PIN protection
- › Optionally available with "two energy directions"

Can be combined with the following products:

- › Terminal cover MKKD-ED300L for supplementary devices
- › Communication and parametrisation software: Combi Master
- › Gateway connection using the OKK-BKE and ZSM-ED

ED100L

Electronic domestic meter

The G generation ED100L is a direct measuring meter for single-phase measurement of active energy in the domestic sector. With a comparable technical specification to the G generation ED300L, the ED100L convinces with its small footprint at installation points.

Summary:

- › MID approval
- › Can be used as a modern measuring device in accordance with the Meter Operation Act
- › MSB interface (RS-232) with SML protocol
- › 1 and 2 tariffs
- › PIN protection

Can be combined with the following products:

- › Terminal cover MKKD-ED100L for supplementary devices
- › Communication and parametrisation software: Combi Master
- › VMMT-E tariff control module
- › Gateway connection using the OKK-BKE and ZSM-ED

eHZ - K

Smart meter generation K for e-mobility

Electronic domestic meter

The K generation eHZ is our domestic meter for measuring stations with plug-in technology. It fulfils the requirements of the FNN specification EDL, as well as the stipulations of the Meter Operation Act for a modern measuring device. The plug-in system allows the device to be easily installed and swapped without any interruptions.

Summary:

- › MID approval
- › Can be used as a modern measuring device in accordance with the Meter Operation Act
- › Available as a consumption and/or delivery meter
- › 1 and 2 tariffs
- › PIN protection

Can be combined with the following products:

- › Terminal cover MKKD-eHZ for additional devices
- › Adapter plate BKE-A, BKE-I or BKE-AZ3
- › Optical communication adapter OKK-BKE-F
- › VMMT-E tariff control module
- › Gateway connection using the OKK-BKE and ZSM-ED



eBZD - G

Electronic basic meter (direct connection)

The G generation eBZD is our FNN basic meter for three-point installation. It corresponds to the form for a basic counter defined in accordance with FNN. It meets the requirements of the Meter Operation Act for connection to a smart meter gateway, including the presentation of historical 24-month data.

Summary:

- › MID approval + PTB
- › Can be used as a modern measuring device in accordance with the Meter Operation Act
- › For installation at three-point measuring stations
- › Can be connected to a smart meter gateway for operation in an intelligent measuring system
- › DIN rail mounting for additional devices
- › Secured TLS communication
- › 60A or 100A version
- › MID approval
- › National TEC (type examination certificate)
- › Optionally available for dual tariffs

Can be combined with the following products:

- › Communication and parametrisation software: Basic Meter Tool
- › Smart meter gateway (e.g. CASA)

eBZD - F

Electronic measuring transformer basic meter

The F generation eBZD is an FNN basic meter with measuring transformer functionality for measuring larger quantities of electricity in an intelligent measuring system. It likewise meets the requirements of the Meter Operation Act for connection to a smart meter gateway, and includes the presentation of historical 24-month data.

Summary:

- › MID approval + PTB
- › Can be used as a modern measuring device in accordance with the Meter Operation Act
- › For installation at three-point measuring stations
- › Can be connected to a smart meter gateway for operation in an intelligent measuring system
- › DIN rail mounting for additional devices
- › Secured TLS communication
- › Optional: GRID, dual tariff or pulse outputs
- › MID approval
- › National TEC (type examination certificate)

Can be combined with the following products:

- › Communication and parametrisation software: Basic Meter Tool
- › Smart meter gateway (e.g. CASA)

eHZ - P

Electronic basic meter with plug-in technology

The P generation eHZ is our FNN basic meter for measuring stations with plug-in technology for domestic applications. It meets the requirements of the Meter Operation Act for connection to a smart meter gateway. The plug-in technology allows the device to be easily installed and swapped.

Summary:

- › MID approval + PTB
- › Can be used as a modern measuring device incl. presentation of historical 24-month values in accordance with the Meter Operation Act
- › For installation at plug-in measuring stations
- › Secured TLS communication
- › Optional: unidirectional wM bus interface
- › Optional: dual tariffs
- › MID approval
- › National TEC (type examination certificate)

Can be combined with the following products:

- › Terminal cover MKKD-eHZ for additional devices
- › Adapter plate BKE-A, BKE-I or BKE-AZ3
- › Opt. communications adapter OKK-BKE-F/OKK-BKE-N
- › VMMT-N tariff control module
- › Smart meter gateway (e.g. CASA)
- › Communication and parametrisation software: Basic Meter Tool

ITZ

Digital multi-tariff meter (pulse generator)

The ITZ is our digital multi-tariff meter for measuring energy in domestic and small business applications. The ITZ supports up to 4 tariffs with up to 15 previous values and maximum measurements

Summary:

- › MID approval
- › CL0, RS-232 or RS-485 interface
- › Possible measurement types: +A/-A, (+R/-R or sum of A, sum of R)
- › Optionally available with manipulation detection
- › Direct or transformer connection

Can be combined with the following products:

- › VARIOMOD modem series (GSM/GPRS, Ethernet, PSTN)
- › Communication and parametrisation software: Combi Master

Industrial Meters

DIN rail devices



Industrial Meters

EMH metering offers special DIN rail meters for industry and commerce. This particularly compact type of meter provides you with precise data on the energy consumption of your machines. The consumer can also be billed internally. With our industrial meters, you can build up this "sub-metering" as a new business area.



DIZ - H

Digital industrial meter

The H generation DIZ is our digital meter for industrial applications and billing purposes in the DIN rail device sector. With its LMN interface, it can be connected directly to a smart meter gateway. It also fulfils the legal requirements for a modern measuring system by presenting historical values. It can already be installed in M-BUS readout systems, and protects your investment thanks to the option for switching to LMN communication. The DIZ – H therefore offers an extremely flexible and compact basis for creating an intelligent measuring system.

Summary:

- › Transformer meter 1(6)A or for direct-measuring 80 A
- › Various voltage variants
- › Active and reactive energy recording
- › Can be used as a modern measuring device in accordance with the Meter Operation Act
- › Can be connected to a smart meter gateway for operation in an intelligent measuring system
- › Secured TLS communication

Can be combined with the following products:

- › Configuration software: Industrial Meter Tool
- › Gateway (e.g. CASA)



DIZ - G

Digital industrial meter

The G generation DIZ is our digital meter for industrial applications and billing purposes. It is the ideal DIN rail device for all measuring scenarios. A solid, single-button solution, a clear operating concept, and an easy to read display with a proven installation control, offer every conceivable comfort.

Summary:

- › Transformer meter 1(6)A - can be used for both 1A and 5A current transformers
- › WV/BV direct 80A, transformer 1/5
- › Modbus, M-bus (also via RS-485), LON
- › Max. 2 pulse outputs (P+/P- or P/Q)
- › Dual energy directions incl. active / reactive energy
- › Short circuit-resistant power supply unit
- › Width: 6 TE incl. communication
- › Transformer factors configurable in the meter

Can be combined with the following products:

- › Configuration software: industrial meter tool
- › Level converter

KIZ

Compact industrial meter

The KIZ, with its device width of 4 TE, is our compact solution for measuring positive active energy for billing purposes in industry. Its optimised design allows for a space-saving installation at its measuring station.

Summary:

- › Measuring precision Cl. B in acc. with DIN EN 50470-1, -3
- › 2 and 4-conductor networks
- › 1 or 2-tariff registers
- › Electrical interface: M-bus (optional)
- › Pulse output
- › Continuous N conductor incl. 2 connection terminals
- › Short circuit-resistant power supply unit

Can be combined with the following products:

- › Configuration software: industrial meter tool

EIZ

Electronic pulse meter

EIZ series pulse meters are used for measuring active energy. Their design makes them suitable for mounting on both DIN rails and walls. Compact design with a width of 7 TE.

Summary:

- › Measuring precision Cl. A or Cl. B in acc. with DIN EN 50470-1, -3
- › 2, 3 and 4-conductor networks
- › 1 tariff register
- › Electrical interface: M-bus (optional)
- › Pulse output
- › Roller meter (can be read when no voltage is being applied)
- › Available as a direct measuring meter or measurement transformer meter

Can be combined with the following products:

- › Configuration software: industrial meter tool

Communication

Secure, fast data transmission

Communications solutions

EMH metering has many years' experience and a broad range of communication technology for industrial, commercial and household customers. We have the right communications solution for every application: from meter modems for RLM billing, through to high security smart meter gateways for smart meter rollouts.



CASA Smart meter gateway

Our CASA (Communication Access Security Administrator) smart meter gateway is the heart of an intelligent measuring system. As a communication unit for connected measuring and auxiliary devices, it is indispensable for the future. The DIN rail mounting offers flexible possibilities for a broad range of applications.

Summary:

- › Fulfills the requirements for a basic device profile in accordance with TR 03109-1
- › Update capability for extended and future application profiles and functions
- › Interoperable standard interfaces for WAN, LMN and HAN
- › HAN/CLS components for smart metering, smart grid, smart home and e-mobility applications
- › Interchangeable value-added module for subsequent and future extensions

Can be combined with the following products:

- › EMH basic meter in acc. with FNN*
- › EMH mMe4.0 with BAB (e.g. ZSM-ED)*
- › RLM solution with LZQJ-XC with BAB (ZSM-XC)*
- › Industrial solutions with DIZ-H*
- › Interoperable with other modern measuring devices and FNN basic meters from other manufacturers*

* all solutions named here have PTB approval

Legend
WAN: Wide Area Network
LMN: Local Metrological Network
HAN: Home Area Network
CLS: Controllable Local System



VARIOMOD

External meter modem

The VARIOMOD communication modem is a meter modem for transparent data readouts, and is suitable for use in all generally operated control centres. The meter can be mounted at any three-point measuring station, or directly on the meter using a special terminal cover.

Summary:

- › Available as an Ethernet or PSTN modem
- › CL1, RS-232 and RS-485 interfaces
- › Extensive push functions (FTP, IPT)
- › NTP time synchronisation of the meter
- › Transparent readouts
- › Remote update / configuration possible
- › Password protection
- › Input contact for external monitoring

Can be combined with the following products:

- › Meter with 1107/DLMS protocol
- › DIZ industrial meter
- › Configuration software: VARIOMOD Manager

VARIOMOD-XC

Internal meter modems

The communication modems from the XC series are designed to be installed and used as internal modems for EMH XC series meters. They are used for reading out data, and are suitable for use in all generally operated control centres.

Summary:

- › Available as an Ethernet or GSM/PSTN/GPRS modem or LTE
- › Additional RS-485 interface
- › Extensive push functions (FTP, IPT, SMS)
- › NTP time synchronisation of the meter (GPRS, ET, LTE)
- › Transparent readouts
- › Remote update / configuration possible
- › Password protection
- › Swappable during meter operation

Can be combined with the following products:

- › LZQJ-XC and DMTZ-XC
- › Configuration software: VARIOMOD Manager

IMXCRS

Internal interface module

The IMXCRS module extends XC series meters with a second parallel and independent interface. It has an RS-232 and a bus-capable RS-485 interface. As with all XC modules, it can be installed while the meter is operating.

Summary:

- › Interface extension for XC series meters
- › RS-232 and RS-485 interface
- › Swappable during meter operation

Can be combined with the following products:

- › LZQJ-XC and DMTZ-XC

ZSM-XC

Meter security module

The meter safety module (ZSM) functions as a communication adapter, with which the LZQJ-XC and DMTZ-XC meters to be extended with an RS-485 data interface in accordance with BSI TR 03116-3. This allows XC series meters to be connected to a smart meter gateway in the intelligent measuring system.

Summary:

- › Secured TLS communication with the smart meter gateway
- › Communication in accordance with BSI TR 03116-3
- › Interface corresponds to LMN requirements
- › Swappable during meter operation
- › PTB approval (BPB)

Can be combined with the following products:

- › LZQJ-XC and DMTZ-XC



OKK RS232/USB

Optical communication adapter

The OKK-RS232 and OKK-USB optical communication adapters are readout adapters for communication between the electricity meter with an optical interface and a readout device with either an RS-232 or a USB interface.

Summary:

- › Readout via the D0 interface on the meter
- › Magnetic holder
- › Usable independent of the voltage supply
- › Data transfer up to 9600 Baud

Can be combined with the following products:

- › Devices with a D0 interface
- › Readout devices with RS-232 or USB interface
- › Software: Combi Master



OKK-BKE Gen. F

Optical communication adapter

This optical communication adapter is our readout adapter for the eHZ-K modern measuring device as a plug-in design. The optical interface of this meter is located on the back of the device. It is used for communication between the eHZ-K and readout devices with an RS-232 interface.

Summary:

- › Suitable for BKE systems in accordance with DIN VDE 0603-5
- › Data transfer up to 9600 Baud
- › RJ10 plug (4-pin)
- › Cable with RJ plug available in different lengths (40 cm, 80 cm, 100 cm or 150 cm)
- › The OKK-BKE-F is identified by its green data cable. This distinguishes it from the OKK-BKE-N.

Can be combined with the following products:

- › eHZ-K in combination with the VMMT-E
- › eHZ-P in combination with the VMMT-N
- › mMe4.0 and eHZ-K with the ZSM-ED



OKK-BKE Gen. N

Optical communication adapter

This optical communication adapter is our readout adapter for the eHZ-P basic meter as a plug-in design. The optical interface of this meter is also located on the back of the device. It is used to connect the eHZ-P to communication devices such as the smart meter gateway.

Summary:

- › Suitable for BKE systems in accordance with DIN VDE 0603-5
- › Transfer rate 921.6 kBit/s
- › RJ12 plug (6-pin)
- › Cable with RJ plug available in different lengths (50cm, 100 cm or 150 cm)
- › The OKK-BKE-N is identified by its grey data cable. This distinguishes it from the OKK-BKE-F.

Can be combined with the following products:

- › eHZ-P
- › FNN basic meter with plug-in technology

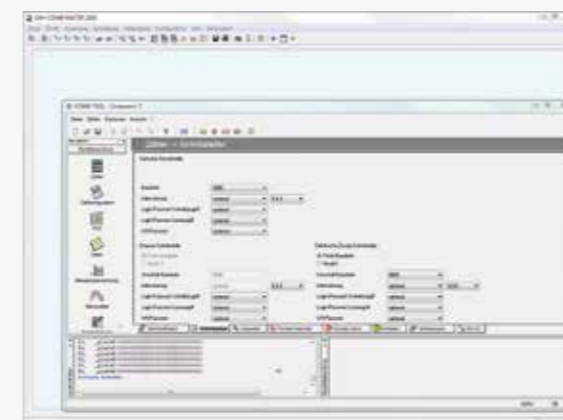
Software

Parametrisation and Communication



Parametrisation and communication software

We offer you the appropriate software solutions for reading out and evaluating data, as well as for configuring, parametrising and controlling our electricity meters, which will make your daily work a lot easier.



EMH Combi Master

Parametrisation and communication software

The EMH Combi Master software is our meter communication and parametrisation program for a large number of available EMH meters. With this software, depending on the meter product, you can read out devices, parametrise them, and control special meter functions and parameters.

Summary:

- › Graphical load profile display
- › Setting the meter clock
- › Extended by the tools EMH Combi-Tool and NXT4-Tool
- › Optional: modem function
- › Optional: advanced installation control

Can be combined with the following products:

- › LZQJ-XC and DMTZ-XC
- › XC-RACK
- › EM4TII
- › eHZ-K
- › ED100L
- › ED300L
- › ED300S
- › ITZ



EMH VARIOMOD Manager

Configuration tool

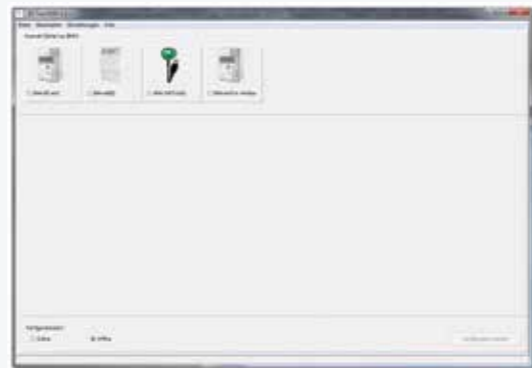
The EMH VARIOMOD Manager software is our software tool for configuring the external meter modems from the VARIOMOD series, and the internal meter modems from the VARIOMOD-XC series. The VARIOMOD Manager is used in the order process for customers to create the configuration for the VARIOMOD-XC modems to be delivered.

Summary:

- › Local or remote access connection to the configuration
- › Configuration of the modem and meter connection
- › Mass update function

Can be combined with the following products:

- › VARIOMOD advanced modem
- › VARIOMOD-XC plug-in modem



Industrial Meter Tool

Software tool for digital industrial meters

The industrial meter tool is our communication and configuration program for digital industrial meters. It is used for reading out and storing the meter data, as well as for changing the device settings.

Summary:

- › Reading out the meter data
- › Communication between the meter and PC with M-bus level converter
- › Configuration of the devices

Can be combined with the following products:

- › EMH industrial meters

Basic Meter Tool

Software tool for basic meters

The basic meter tool (BM Tool) is our configuration program for the EMH basic meters eHZ-P, eBZD-F and eBZD-G. It can be used to read out and store meter data via the LMN interface, and to change the settings on the devices.

Summary:

- › Configuration options
- › Reading out the meter data
- › Changing the tariff in the device
- › Reading out/viewing of logbooks for tracking events on/in the device
- › Storage of the seconds index and meter reading
- › Connection of an OKK possible

Can be combined with the following products:

- › eHZ-P
- › eBZD-F
- › eBZD-G
- › ZSM-XC meter security module

Disclaimer and Copyright

Disclaimer

The information contained in this publication is subject to amendment without notice. The text and imagery information is non-binding and is provided solely for informative purposes.

The information contained in this document is the property of EMH metering GmbH & Co KG. This product overview contains possible functions of EMH metering GmbH & Co. KG products and makes no claim to be complete. Product specifications can be checked for feasibility at the request of the customer. Please get in touch with your EMH contact partner.

EMH metering GmbH & Co KG will assume no responsibility for errors or omissions in this product overview.

EMH metering GmbH & Co KG does not guarantee the correctness or completeness of the information, texts or graphics.

This publication is provided without any warranty whatsoever, either explicit or implied. This includes, but is not limited to, warranties of merchantability and suitability for a particular purpose, and warranties of non-infringement of applicable legislation.

EMH metering GmbH & Co KG will assume no liability for damages of any kind, including and without limitation to, direct, special, indirect or consequential damages in conjunction with the usage of these documents. This restriction will not apply in the event of intent or gross negligence.

All rights reserved.

© 2020 EMH metering GmbH & Co. KG

Your contact persons at EMH metering GmbH & Co. KG

Sales

Tel.: +49 38851 326 1910
Fax: +49 38851 326 1129
Email: vertrieb@emh-metering.com

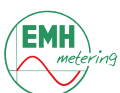
Technical Support

Tel.: +49 38851 326 1930
Fax: +49 38851 326 1129
Email: support@emh-metering.com

Publisher:

EMH metering GmbH & Co. KG
Neu-Galliner Weg 1
19258 Gallin/GERMANY

Tel.: +49 38851 326-0
Fax: +49 38851 326-1129



www.emh-metering.com
info@emh-metering.com