

Optical Communication Adapter OKK with USB-interface

Installation of the EMH OKK-USB-driver and virtual COM-Port
with Windows 2000/XP/Vista/7



All of the contents published in this manual are copyrighted. Translations, reprints, duplication and also saving of this manual in data processors require the exclusive permission from EMH.

All of the trademarks and product names mentioned in this manual are the property of EMH metering GmbH & Co. KG or the respective title holder.

EMH is certified according to DIN ISO 9001:2008 and continually uses its best endeavours to improve the products.

The content of this manual and the technical specifications can be extended, altered or removed without prior notice.

The description of the product specifications in this manual does not represent a part of a contract.

© 2012 EMH metering GmbH & Co. KG. All rights reserved.

If there are any questions or inspirations please contact us:

EMH metering
GmbH & Co. KG

Neu-Galliner Weg 1
19258 Gallin
GERMANY

Tel.: +49 38851 3260
Fax: +49 38851 3261-129
E-mail: info@emh-metering.com
Web: www.emh-metering.com

Technical Support:

Tel.: +49 38851 3261-930
E-mail: support@emh-metering.com

Table of contents

1	Preface	4
2	Example for installations with Windows XP	5
2.1	Installation of the EMH OKK-USB and USB Serial Converters	5
2.2	Installation of the USB Serial Port	7
2.3	Change the COM Port.....	9
3	Tips for problem solutions	10
3.1	Notification during the installation of the driver	10
3.2	General tips and problem solutions	10

1 Preface

Before you can use the optical communication adapter, you must install and set up a serial communication interface on your PC or laptop via a virtual COM-Port (physical not available). For this you need the supplied driver CD.

Since the OKK is connected via the USB connector to the PC or laptop, a PC or laptop with an operating system supported USB (Windows 2000/XP/Vista/7) is required.

Note: This manual describes exemplarily the installation of the OKK-USB with Windows XP. The installation may run differently with other released operating systems.

2 Example for installations with Windows XP

2.1 Installation of the EMH OKK-USB and USB Serial Converters

1. Connect the optical communication adapter EMH OKK-USB with an arbitrary USB connector to your computer or laptop.
2. The installation assistant notifies a new device on the USB connector.



3. The New Hardware Wizard opens automatically. Choose from the question: "Can Windows connect to Windows Update to search for software?" with **No, not this time**.

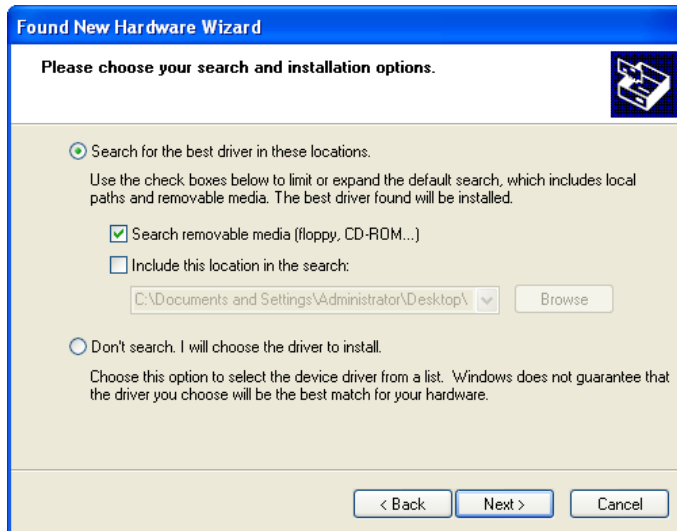


4. Click on **Next**.
5. Insert the supplied driver CD with the driver data in your CD-ROM drive.
6. Choose **Install from a list or specific location (Advanced)**.

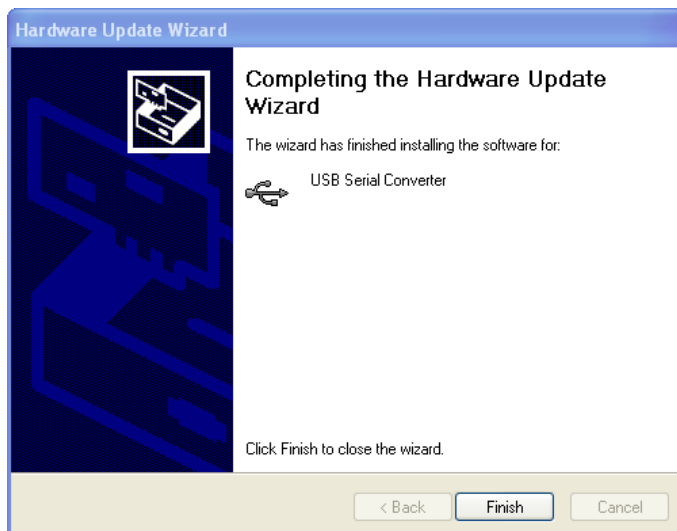


7. Click on **Next**.

8. Choose **Search removable media (floppy, CD-ROM...)**.



9. Click on **Next**.
10. After the installation the following window appears.



11. Click on **Finish** to finish the installation.

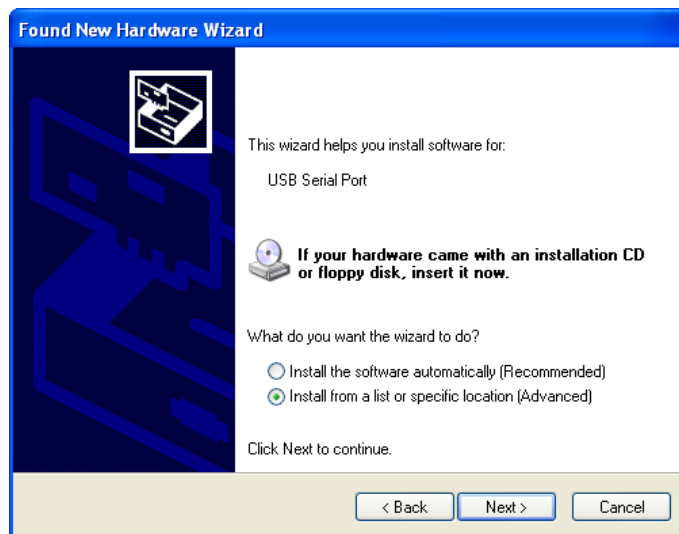
The installation of the USB Serial Converter is now finished. You must install the USB Serial Port now. This automatically follows after the successful installation of the USB Serial Converters.

2.2 Installation of the USB Serial Port

1. The following window will appear automatically. Choose from the question: “Can Windows connect to Windows Update to search for software?” with **No, not this time.**

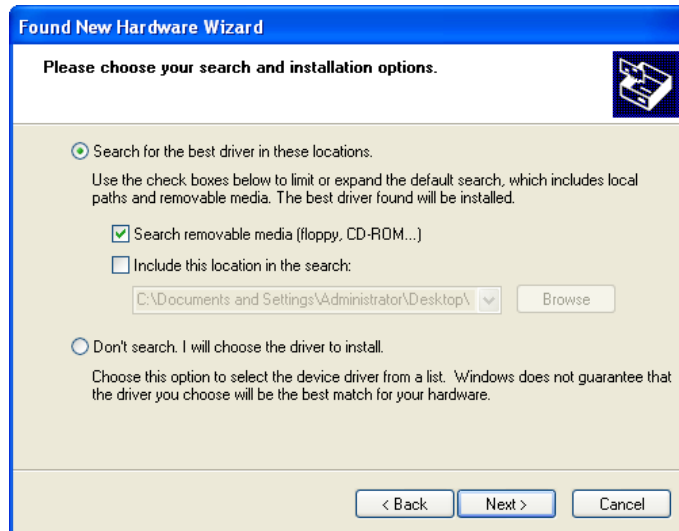


2. Click on **Next.**
3. Choose **Install from a list or specific location (Advanced).**

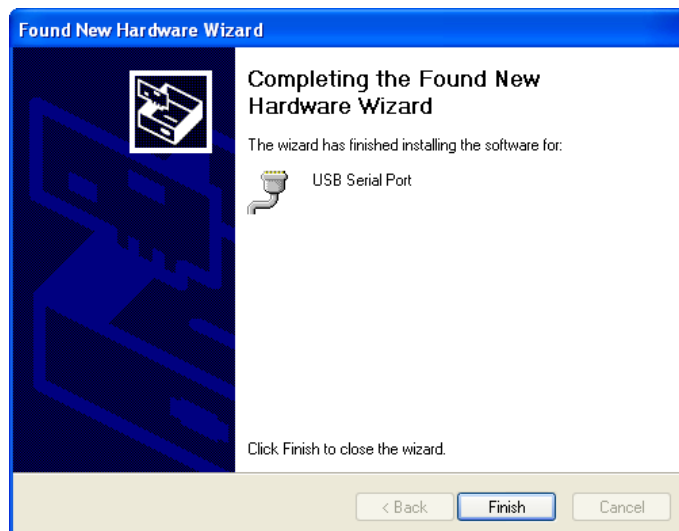


4. Click on **Next.**

5. Choose **Search removable media (floppy, CD-ROM...)**.



6. Click on **Next**.
7. After the installation the following window appears.



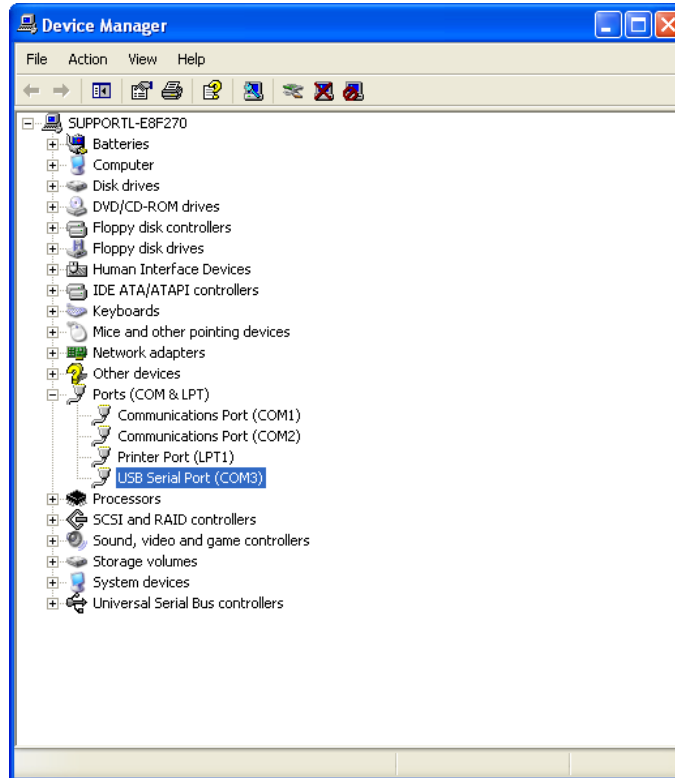
8. Click on **Finish** to finish the installation.

2.3 Change the COM Port

The PC respectively the laptop automatically assigns the EMH OKK-USB to a free COM port. Usually the settings for a normal operation of the OKK may be left.

If you want to change the COM port please follow the instructions:

1. Open the **Device Manager** (Start > Control Panel > System > Hardware > Device Manager)



2. Choose **USB Serial Port (COM...)**.
3. Click on **properties**.

3 Tips for problem solutions

3.1 Notification during the installation of the driver

Announcement: Destination file is already present and new than the source file

The announcement means that a device with the same USB- chip has already been installed however; the drivers which were installed for this are newer than the drivers which were delivered with this product. In order to avoid problems with the device which has already been installed select that the already installed drivers will **not be replaced**?

Announcement: Source file is newer than the destination file

This announcement means that a device with the same USB-chip has already been installed however; the drivers which were installed for this are older than the ones which were delivered with the product. In order to avoid problems with the EMH-OKK-USB select that the already installed drivers are **replaced** with the newer drivers from the USB-infrared adapter.

Announcement: ... has the Windows Logo Test failed

Windows performs a compatibility test. Confirm this window with **Continue installation**.

3.2 General tips and problem solutions

1. After the de-installation of another USB-device the EMH OKK-USB no longer functions.

The other device supposedly uses the same USB-chip as the EMH OKK-USB. With the de-installation the driver for the EMH OKK-USB is also de-installed. In this case you have to install the driver for the EMH OKK-USB.

2. After the installation of another USB-device the de-installation entry in the menu system control/software for the EMH OKK-USB is no longer present.

The other installed device uses the same driver as the EMH-OKK-USB. It is normally not necessary to de-install the drivers.

3. The EMH OKK-USB is not recognized or no driver can be installed.

Another device uses the same drivers as the EMH OKK-USB. However, the drivers for the device were uninstalled. Thereby, the entries in the windows registry for the OKK-USB were not taken out, only the driver files. In order to now remove the relevant entries in the windows registry proceed as follows:

- Start the program **ManDelInst.exe** from the installation-CD.
- Select the operation system which is to be used.
- Now a de-installation program is started.
- Remove the EMH OKK-USB from the computer and then press the button **CONTINUE**.
- Now the rest of the entries are removed from the windows registry. Restart the computer.
- If you now plug in the EMH OKK-USB once again the adapter is recognized again and the operating system requires again the driver file for the installation of the adapter.